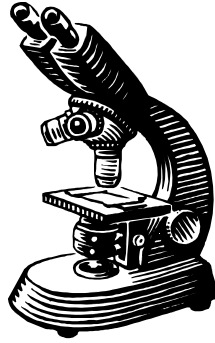


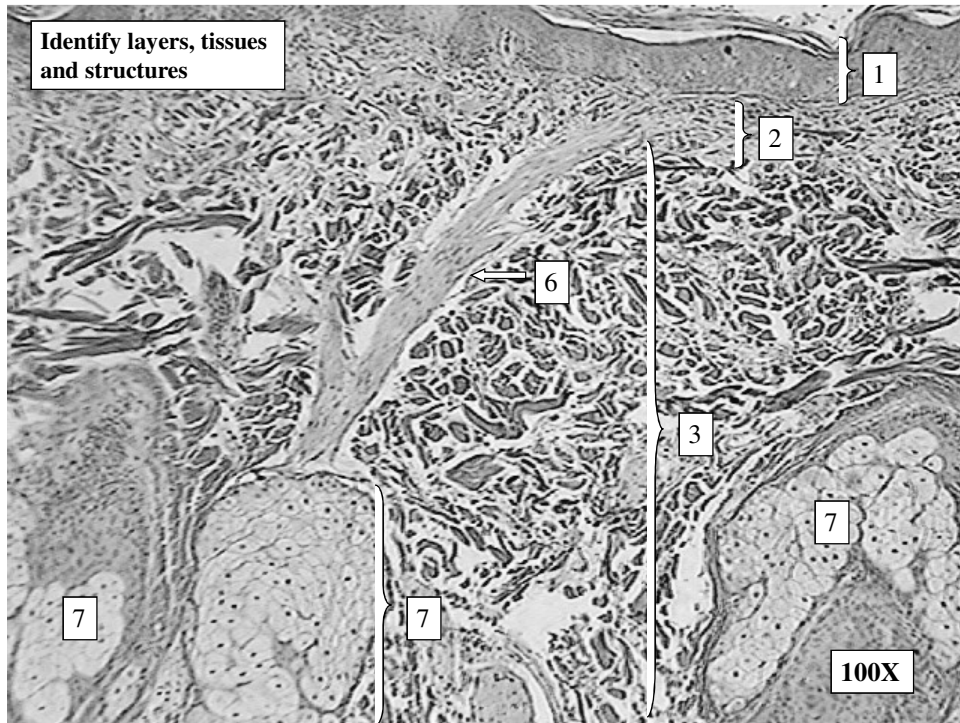
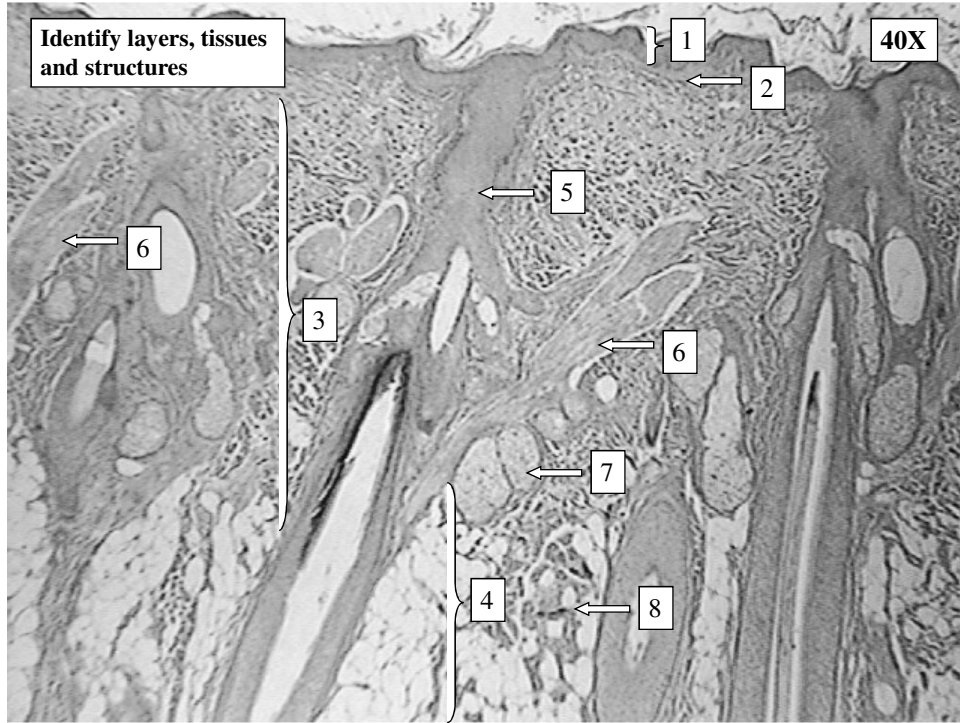
Bio& 241 A&P

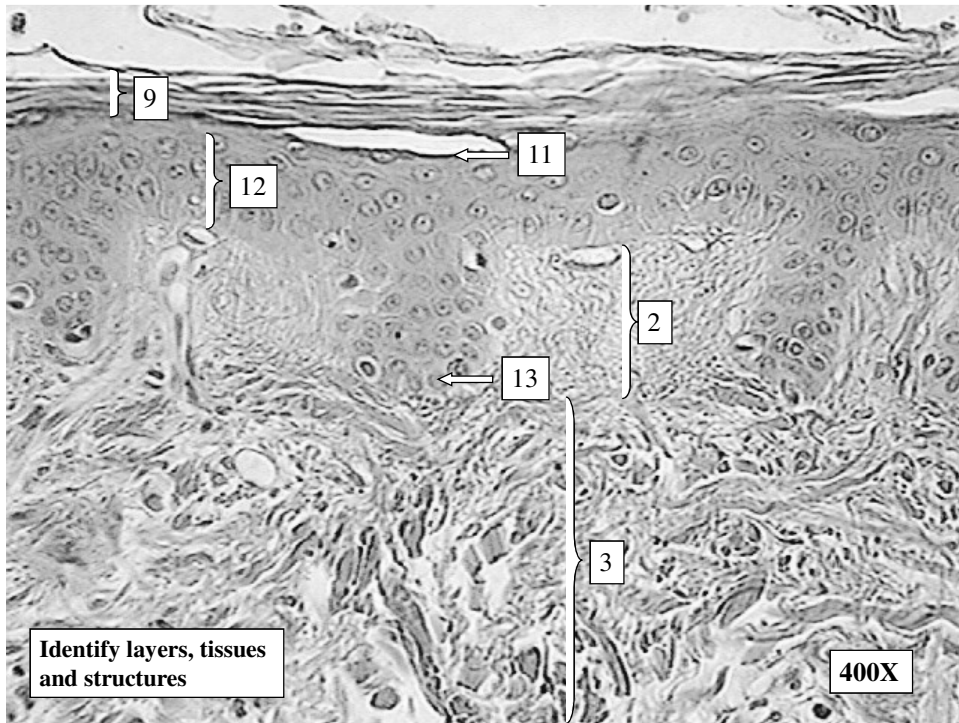
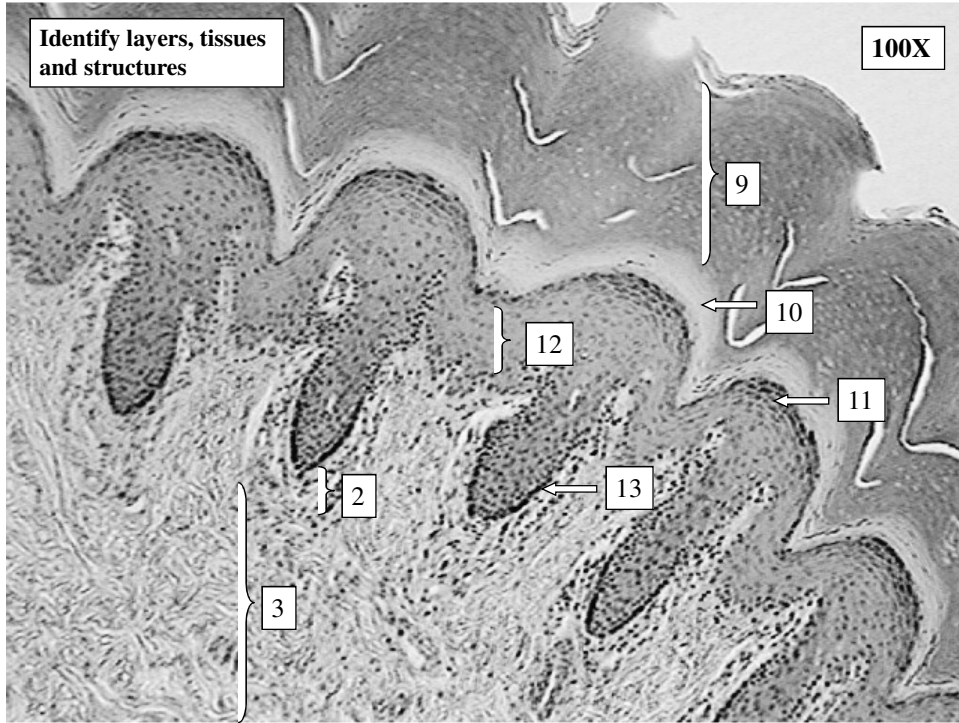
Unit 1 / Lab 4

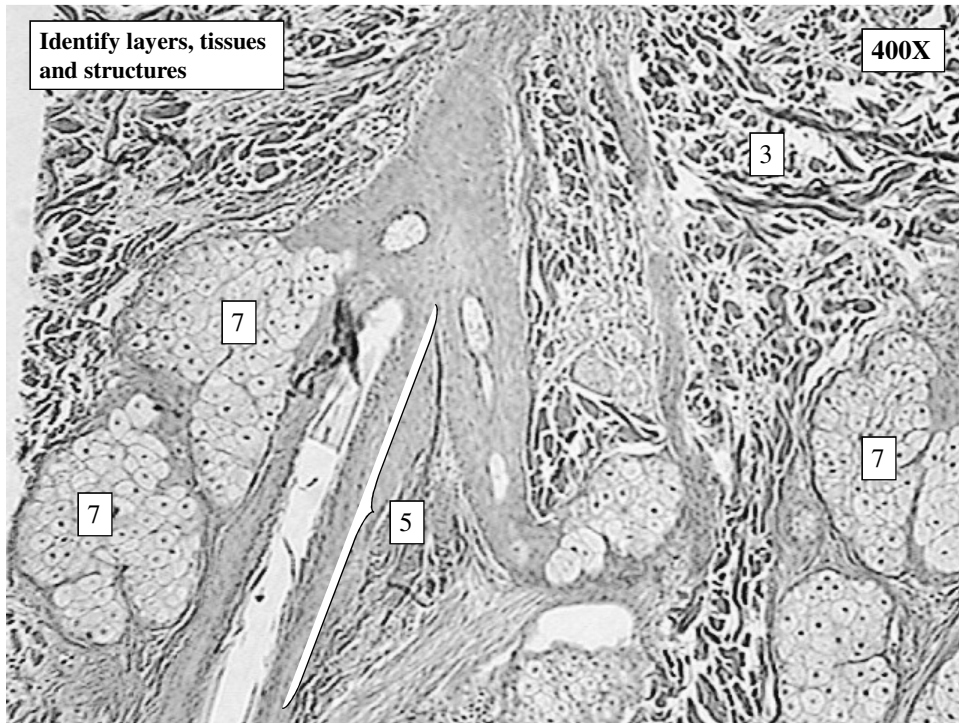
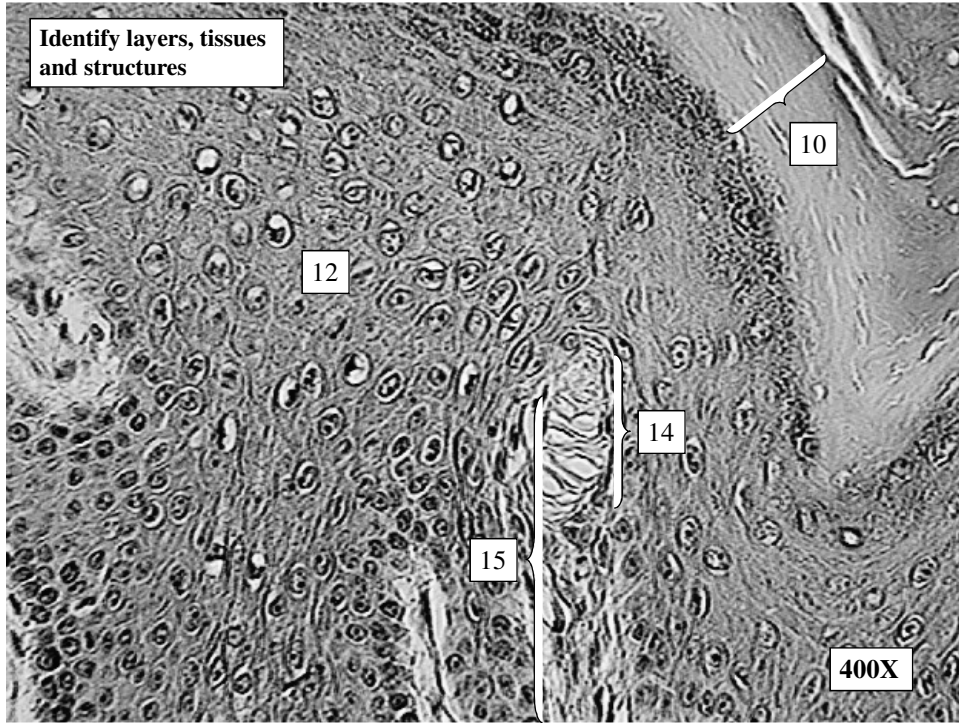


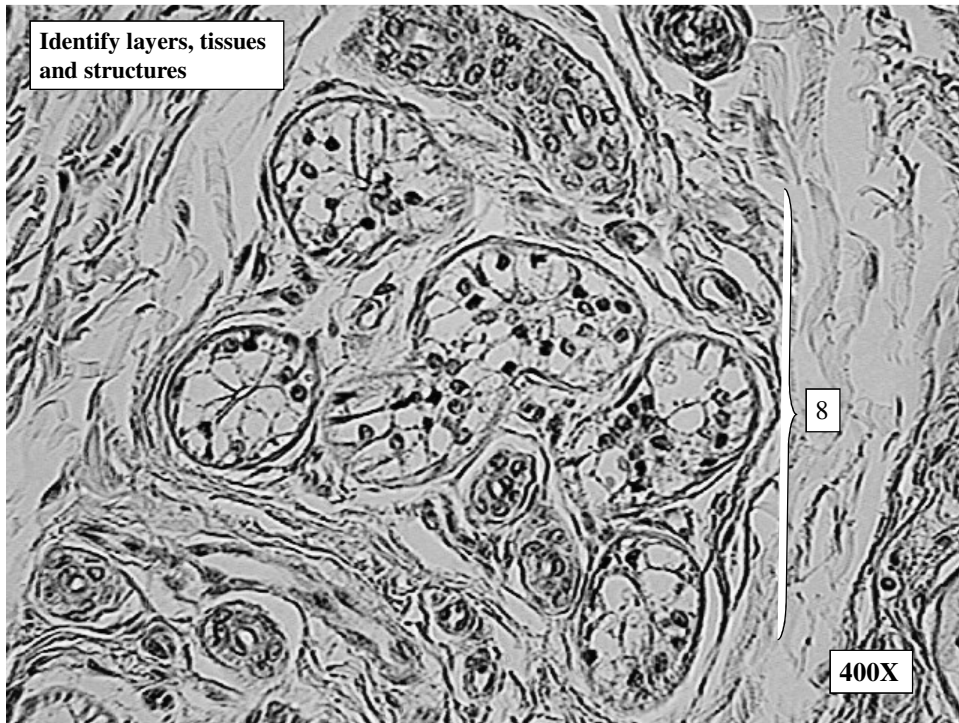
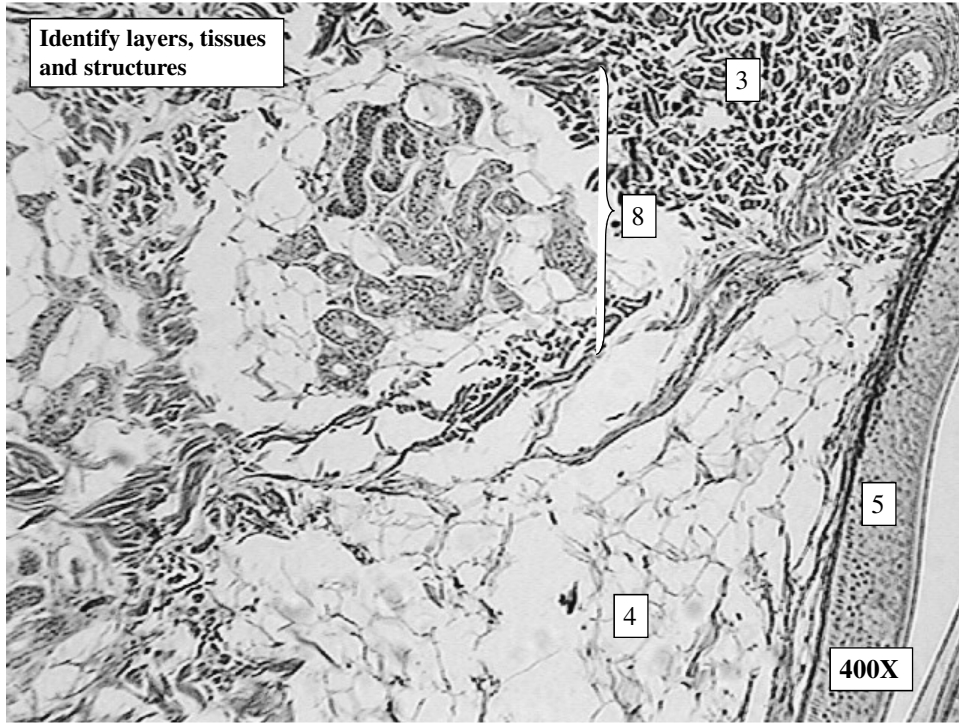
Histology Slides for the Epithelial, Connective, and Integumentary Tissues

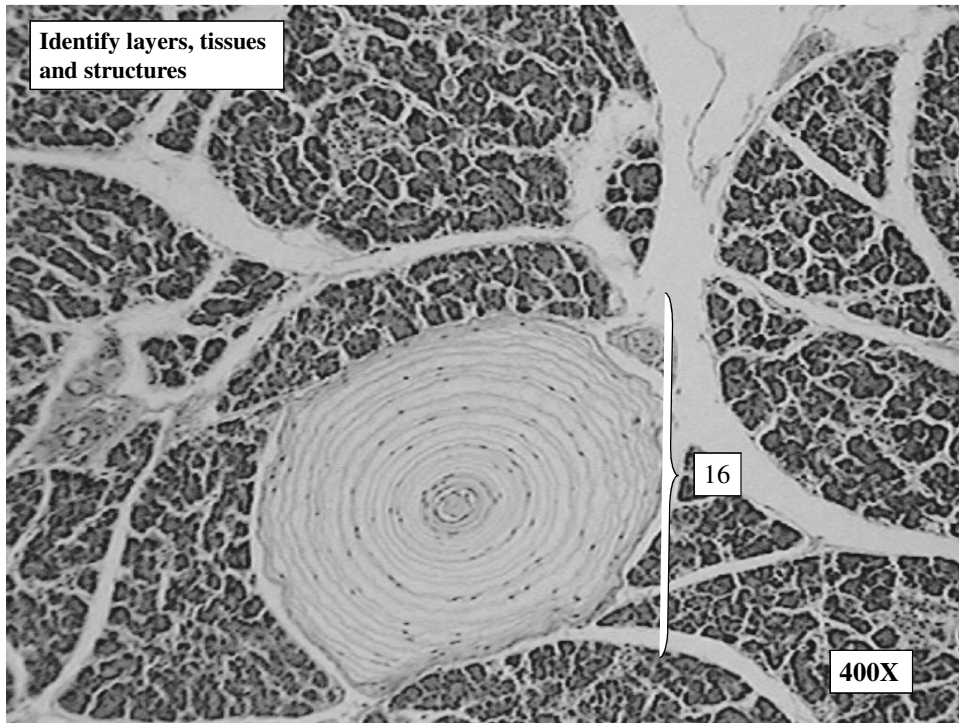
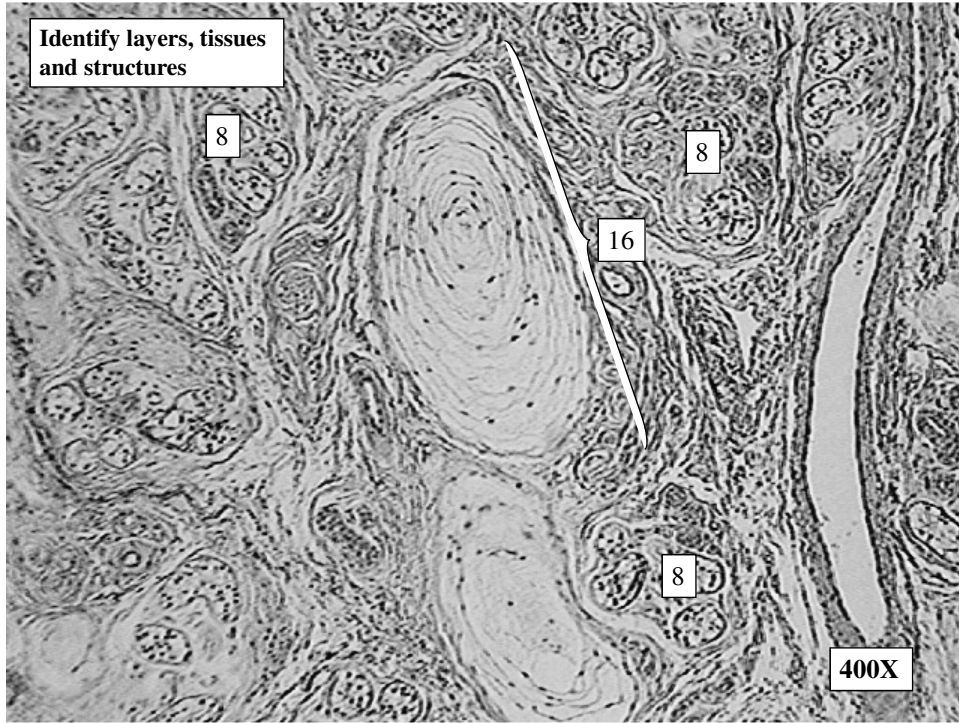
- **Slides are presented in order of magnification**
- **As you view the following slides, make sure you can accomplish these goals:**
 - 1. Can you identify the tissue observable on the slides?**
 - 2. Can you identify the specific structures or layers indicated by the numbered arrows or brackets?**
- **At the end of a sequence, you will find the answers to the above for each vessel and layer.**











Answers to Integumentary Slides

- Slide 3: Human scalp overview
- Slide 4: Human scalp low power
- Slide 5: Primate finger tip low power epidermis/dermis interface
- Slide 6: Human scalp high power epidermis/dermis interface
- Slide 7: Primate fingertip high power of epidermis
- Slide 8: Human scalp high power of dermis
- Slide 9: Human scalp high power dermis/hypodermis interface
- Slide 10: Primate finger tip high power of the dermis
- Slide 11: Primate finger tip high power of the dermis
- Slide 12: Pancreas high power

Answers to Integumentary Slides

Guide to numbers:

1. Layer: Epidermis
Tissue: Keratinized Stratified Squamous
2. Layer: Papillary region of the dermis
Tissue: Areolar tissue
3. Layer: Reticular region of the dermis
Tissue: Dense Irregular Connective Tissue
4. Layer: Hypodermis
Tissue: Adipose tissue
5. Hair shaft
6. Arrector Pili muscle
7. Sebaceous gland
8. Sudoriferous (eccrine) gland

Answers to Integumentary Slides

Guide to numbers:

- 9. Stratum Corneum**
- 10. Stratum Lucidum**
- 11. Stratum Granulosum**
- 12. Stratum Spinosum**
- 13. Stratum Basale or Germinativum**
- 14. Meissner's Corpuscle**
- 15. Dermal Papilla**
- 16. Pacinian Corpuscle**